

# Bond Apatite<sup>®</sup> A bone graft cement

Another novel product of **Augma Biomaterials Ltd.** is a combination of **3D Bond™** with a formula of hydroxyapatite granules. This is a cement-based, osteoconductive composite, synthetic bone substitute that is used for bone reconstruction in a range of dental applications and is intended for filling, augmenting and reconstructing a broad range of defects in the maxillofacial bones.

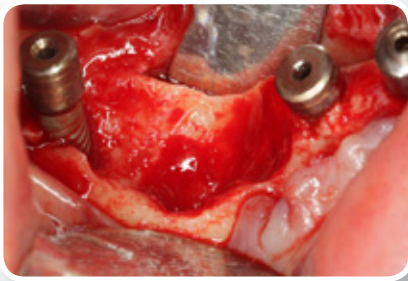
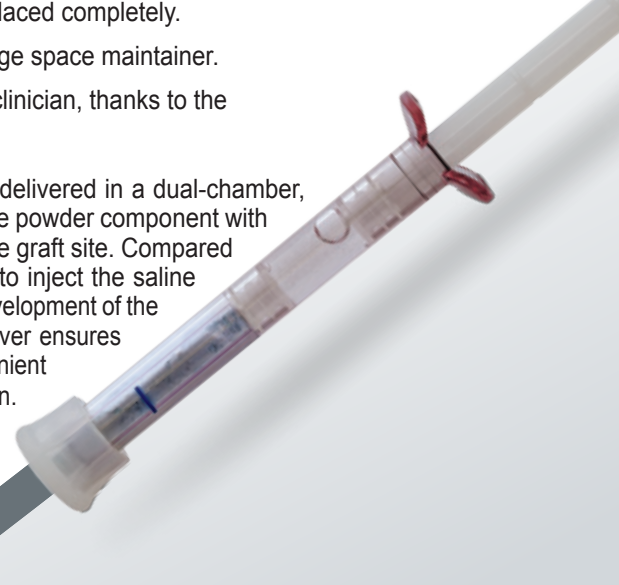
**Bond Apatite<sup>®</sup>** is composed of 2 matrices which have different absorption coefficients and characteristics.

The first matrix is biphasic calcium sulfate (**3D Bond™**) which is absorbed and replaced completely.

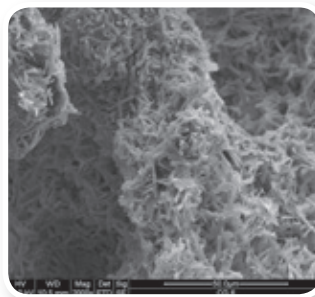
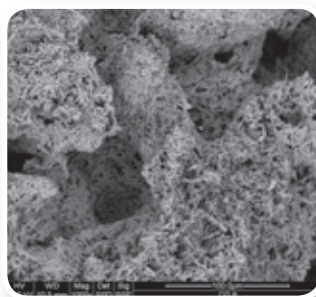
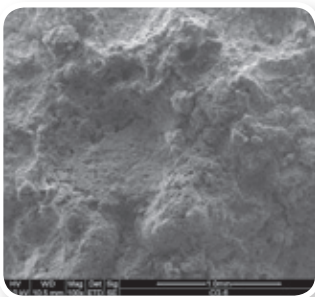
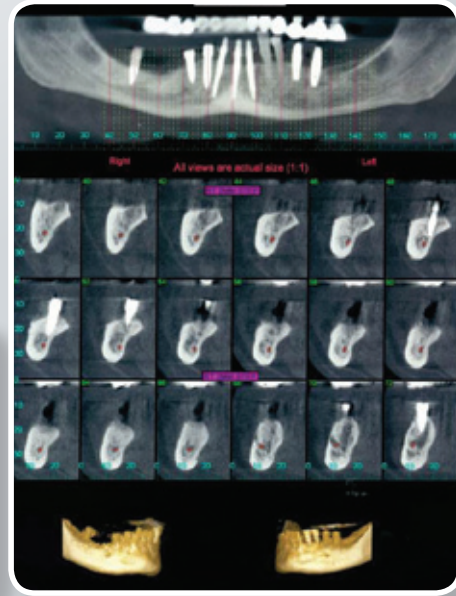
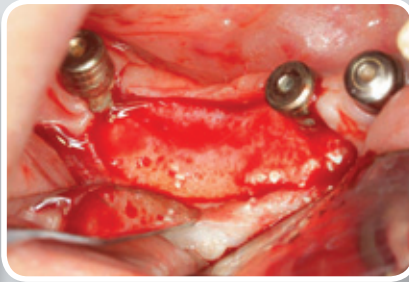
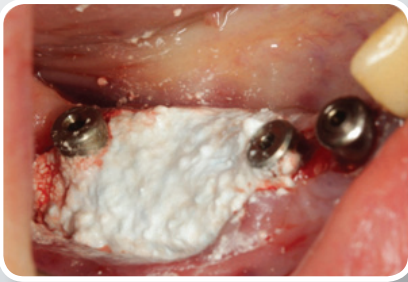
The second matrix is a formula of hydroxyapatite granules which serves as longer range space maintainer.

The product guarantees reduced treatment time and convenient manipulation for the clinician, thanks to the product's unique nature and the specially designed syringe.

**Bond Apatite<sup>®</sup>** is FDA cleared and CE approved. As of 2015, Bond Apatite<sup>®</sup> is delivered in a dual-chamber, prefilled syringe, containing the granulated powder and physiological saline. Mixing the powder component with the liquid in the driver results in a viscous composite that is suitable for injection into the graft site. Compared to the previous version of the driver, in which additional accessories had to be used to inject the saline into the driver's head, this new development of the "all-in-one" Bond Apatite<sup>®</sup> driver ensures easy and more convenient handling by the clinician.



**Clinical case 2:**  
Augmentation using **Bond Apatite<sup>®</sup>** for large bone destruction after removal of hopeless tooth.



Buccal  
Dehiscence



**Bond Apatite<sup>®</sup>** Internal porosity structure divided into macro and micro porous in different magnifications (SEM images).

Tel 01274 885544

[www.trycare.co.uk/bond-apatite](http://www.trycare.co.uk/bond-apatite)